



8 Magnolia Close, Andover, SP10 3QW

£1,600 PCM







# 8 Magnolia Close

Andover, SP10 3QW

- Three Bedroom House
- Immaculately presented throughout
- Downstairs cloakroom
- Cul de sac location
- Driveway parking
- Modern open plan living
- Bathroom with bath and shower cubicle
- Enclosed rear garden
- Garage with electric
- Located close to popular local schools

Ashwells are pleased to present this beautiful, modern three-bedroom house, ideal for those seeking stylish, open-plan living. This property is immaculately presented and filled with natural light, offering a welcoming, airy atmosphere throughout. Key features include:

Three Bedrooms: Spacious and well-maintained.

Open-Plan Living: Modern layout combining living and dining areas.

Driveway Parking: Convenient off-street parking.

Utility Room: Separate utility area for added convenience.

Enclosed Rear Garden: Private, secure garden space.

Bathroom: Equipped with both a bathtub and walk-in shower.

Downstairs Cloakroom: Additional convenience on the ground floor.

Garage with Electric Supply: Perfect for extra storage or workshop space.

Available from mid-December, this stunning home is perfect for anyone looking to enjoy modern, comfortable living in a bright, well-designed space.



ENTRANCE

HALLWAY

CLOAKROOM

SITTING ROOM

KITCHEN/DINER

UTILITY ROOM

CONSERVATORY

FIRST FLOOR

MASTER BEDROOM

SECOND BEDROOM

THIRD BEDROOM

FAMILY BATHROOM

OUTSIDE







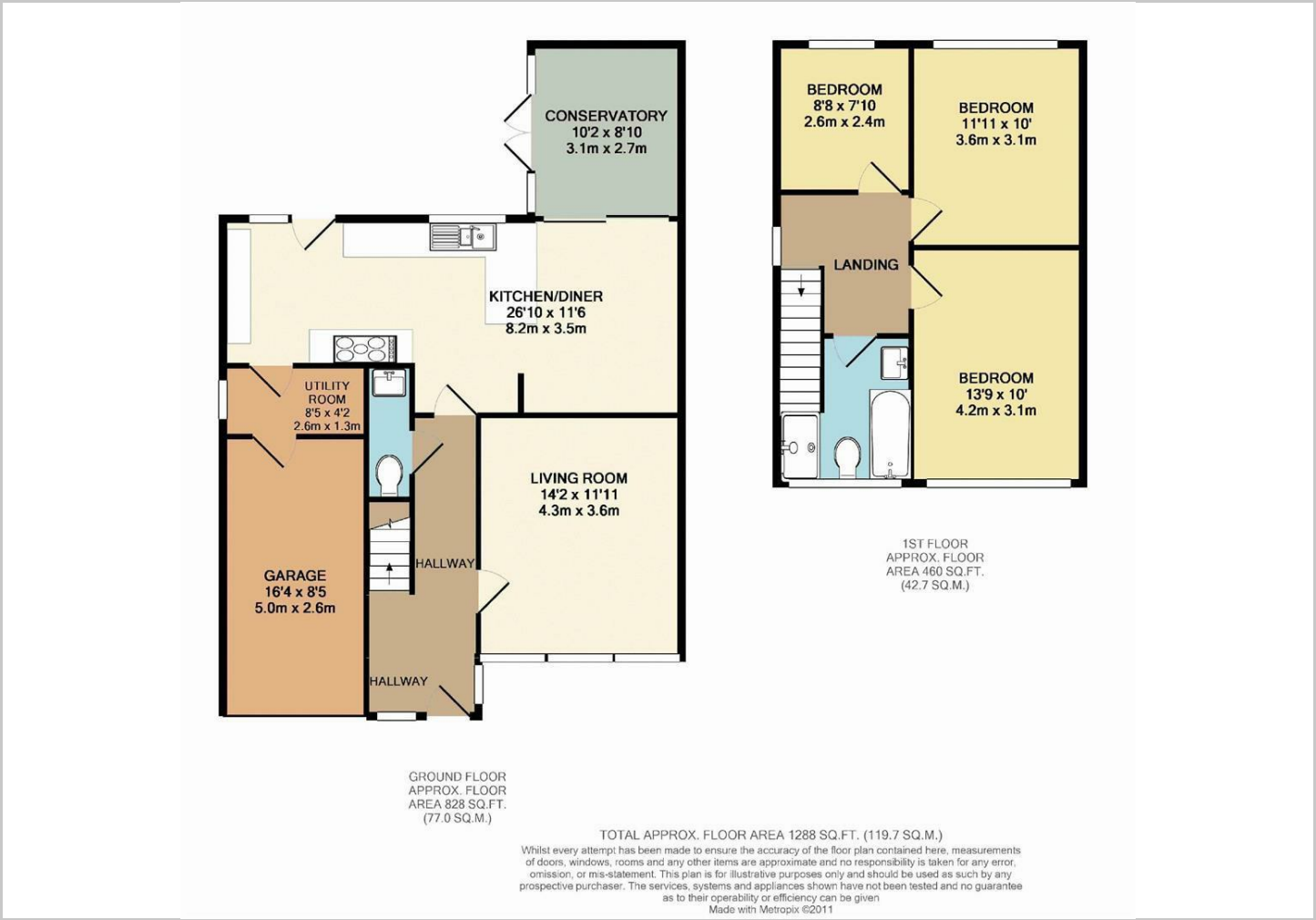
Directions







Floor Plans



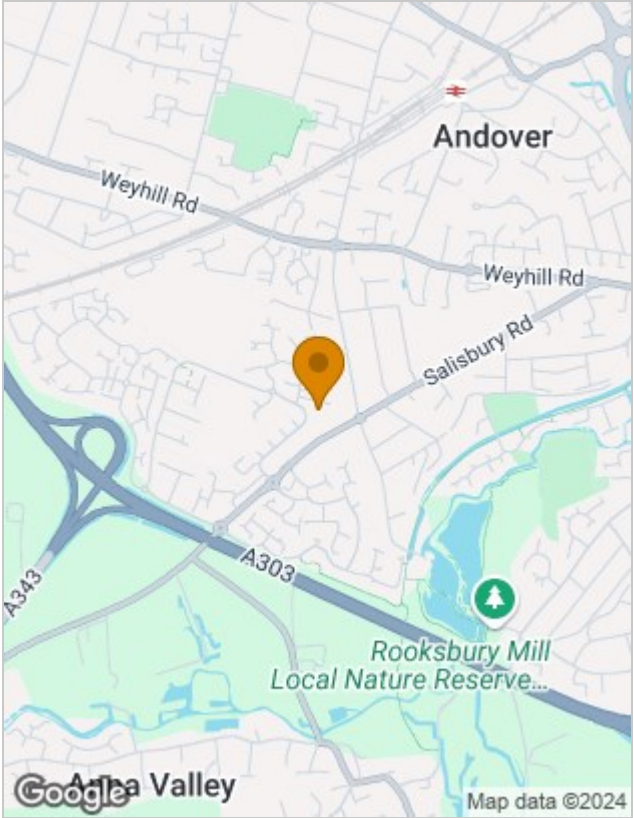
Viewing

Please contact our office on 01264 710776 if you wish to arrange a viewing appointment for this property or require further information.

The particulars are set out as a general outline only for the guidance of intended purchasers or lessees, and do not constitute, any part of a contract. Nothing in these particulars shall be deemed to be a statement that the property is in good structural condition or otherwise nor that any of the services, appliances, equipment or facilities are in good working order. Purchasers should satisfy themselves of this prior to purchasing.

Suite 520, Andover House George Yard, Andover, Hampshire, SP10 1PB  
Tel: 01264 710776 Email: [info@ashwellsestateagents.co.uk](mailto:info@ashwellsestateagents.co.uk) [www.ashwellsestateagents.co.uk](http://www.ashwellsestateagents.co.uk)

Location Map



Energy Performance Graph

